

Isocheck PRIMO® System

overlay platform system direct to floorboards

Manufactured with melamine-free APF

Suitable for: E1 - new build • E1 - material change of use

Conversions • Refurbishments • New build - masonry • New build - timber frame

product data sheet

Product data

Overall size:	2400mm x 600mm x 26mm
Resilient layer thickness:	8mm
Resilient layer:	APF
Weight:	18.8kg per sheet

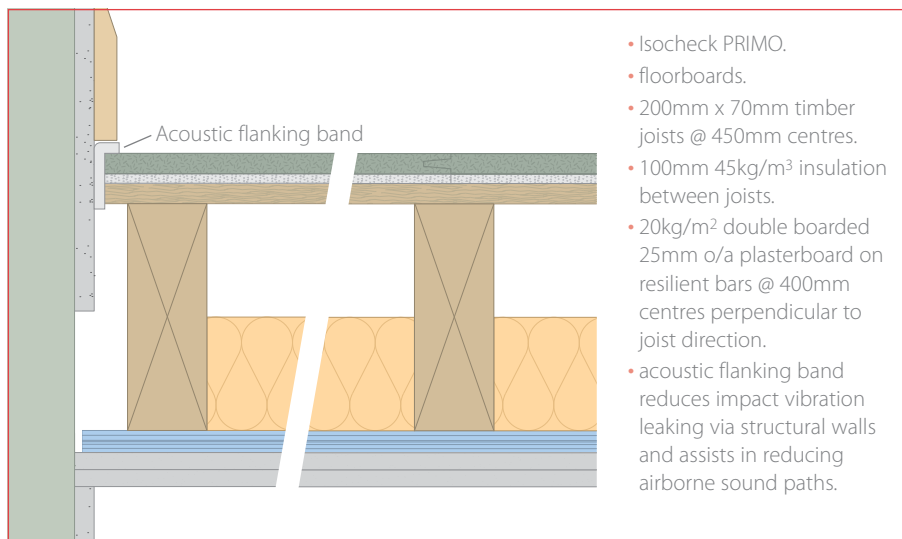
Performance (on the construction below)

Treated floor with	$D_{nT,w} + C_{tr}$	$L'_{nT,w}$
Isocheck PRIMO	$\geq 45dB$	$\leq 62dB$

Description

The Isocheck PRIMO system is designed to reduce sound transmission through traditional joisted timber floors.

Isocheck PRIMO consists of a 8mm layer of APF bonded to 18mm P5 V313 moisture resistant chipboard. When installed as part of a complete party floor construction the system enables a traditional timber joisted floor to meet the sound transmission standards of ADE 2003 (amended 2004).



Specification

The acoustic floor shall be:

- **Isocheck PRIMO system**, manufactured by Isomass Ltd. St Johns Innovation Centre, Cowley Road, Cambridge, CB4 0WS and installed in accordance with manufacturer's instructions / recommendations.

Installation

- Apply Isocheck Acoustic Angled Flanking Band on the edges of the Isocheck boards just before they are pushed against the perimeter walls to isolate the board from the wall.
- Lay Isocheck PRIMO system over a structural timber sub-floor, in brick bond pattern, applying Isocheck adhesive to all tongued and grooved panel joints.
- Install skirting and trim off excess Flanking Band.
- Full installation instructions are available and must be used in conjunction when laying this floating floor system.

For details of incorporating Isocheck PRIMO into timber frame construction see page 2.

The Isocheck PRIMO system is also available in a high load version - **Isocheck PRIMO HL** - for bathroom and kitchen applications (see separate product data sheet).

This system enables all bathroom and kitchen fittings to be placed directly on the PRIMO HL board and facilitates a good base for tiling finish (see tiling data sheet).

Every effort has been taken in the preparation of this sheet to ensure the accuracy of representations contained herein. Recommendations as to the use of materials, construction details and methods of installation are given in good faith and relate to typical situations. However, every site has different characteristics and reliance should not be placed upon the foregoing recommendations. Advice can be given as to specific applications.

For advice on treatment of services and penetrations, consult our brochure or visit our website:

www.isomass.co.uk



Technical enquiries

Tel: **0845 838 33 99**

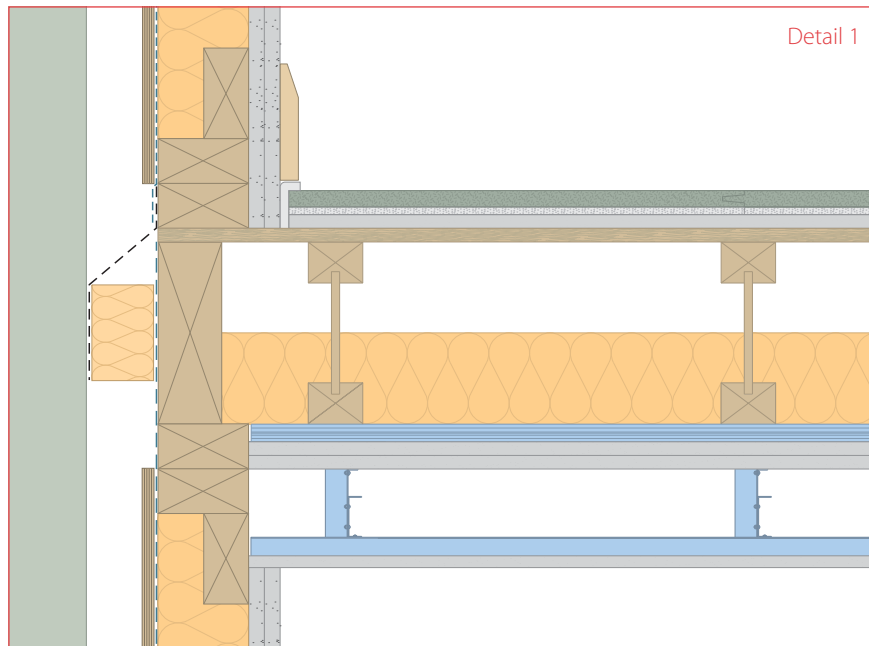
Fax: **0845 838 33 89**

Email: info@isomass.co.uk

Isocheck PRIMO® Systems

Overlay platform system for timber frame construction

Isocheck PRIMO and Isocheck PRIMO HL boards are ideal for floors as part of a timber frame construction.



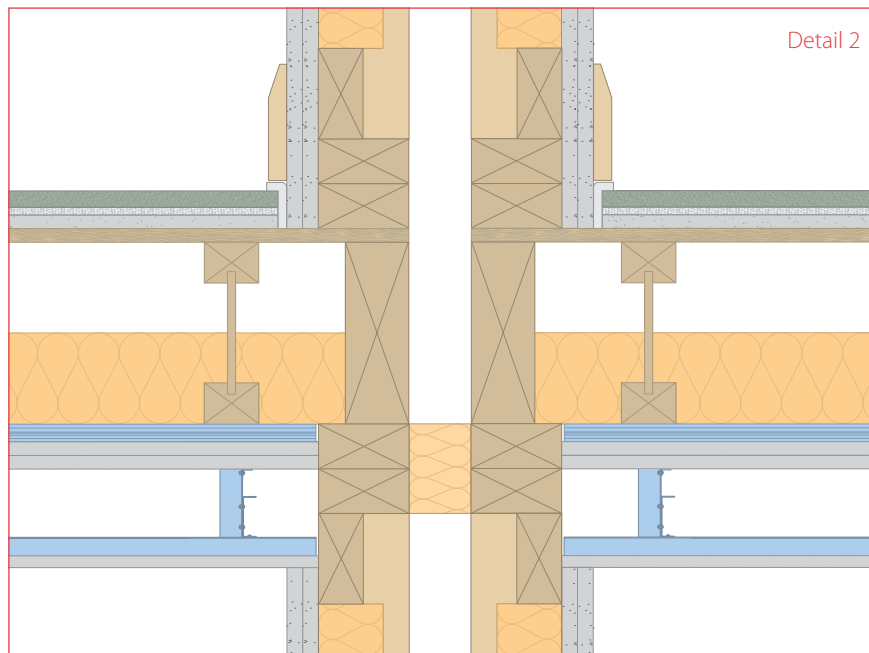
Performance

Treated floor with Isocheck PRIMO/PRIMO HL (on the party floor shown with a joist depth not less than 200mm).

$D_{nT,w} + C_{tr}$	$L'_{nT,w}$
$\geq 48\text{dB}$	$\leq 56\text{dB}$

External (flanking) wall junction (Detail 1)

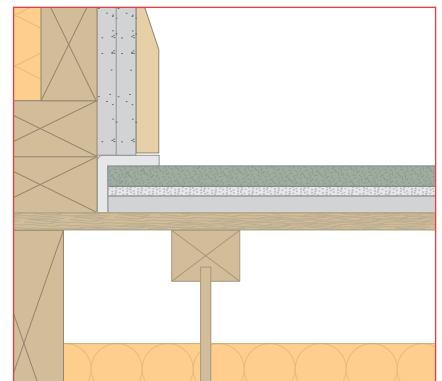
- masonry outer leaf.
- external wall cavity (min. 50mm).
- cavity closer with cavity stop.
- timber sheathing and permeable membrane (if required).
- quilt insulation min.10kg/m³.
- two layers of gypsum-based board nominal 8kg/m² each layer.
- joists may span in either direction.



Separating wall junction (Detail 2)

- cavity closer with cavity stop.
- two layers of gypsum-based board nominal 8kg/m² each layer.
- joists may span in either direction.

Alternative flanking detail



Every effort has been taken in the preparation of this sheet to ensure the accuracy of representations contained herein. Recommendations as to the use of materials, construction details and methods of installation are given in good faith and relate to typical situations. However, every site has different characteristics and reliance should not be placed upon the foregoing recommendations. Advice can be given as to specific applications.

For advice on treatment of services and penetrations, consult our brochure or visit our website:

www.isomass.co.uk



Technical enquiries

Tel: 0845 838 33 99

Fax: 0845 838 33 89

Email: info@isomass.co.uk